



## SUPPORTING HARMONY, IMPROVING NUTRITION AND THE ENVIRONMENT (SHINE)

### FOR THE ROHINGYA AND HOST COMMUNITIES

Cox's Bazar district is an area prone to natural disasters, such as cyclones, floods, and landslides, with high poverty rates, chronic food insecurity, and malnutrition. The situation has been exacerbated by the influx of Rohingya fleeing from Myanmar. Since 2017, almost a million Rohingya refugees live in 33 camps located in Ukhiya and Teknaf Upazila, south of the city of Cox's Bazar, without real safety, dignity, or social equity. The massive increase of population has put an immense strain on natural resources, infrastructure, and services in host communities, who have been the first responders to the Rohingya crisis.

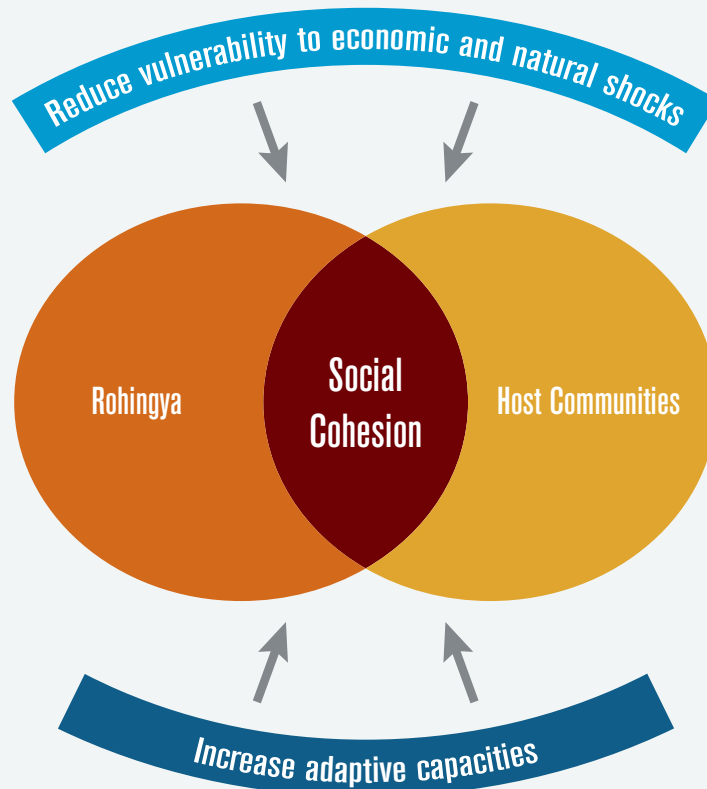
Covid 19 lockdown and the onset of other international crisis have further jeopardize the livelihoods of the most disadvantaged (e.g. daily labourers) who face assets depletion, price inflation

for basic goods, and labour competition.

SHINE project intervenes on the nexus between humanitarian response and development to increase the resilience of Rohingya refugees and host communities.

The project aims at boosting **adaptive capacities** of families through the promotion of **climate-resilient agricultural practices** and the strengthening of **local market systems**. It reduces communities' vulnerability to climate and economic shock by providing cash support and reinforce their **disaster preparedness**. Finally, it works to strengthen **social cohesion** by promoting positive economic connections between host communities and Rohingya and leveraging these economic interests to stimulate a change in the mutual perceptions of different groups.

# OUR INTERVENTION



## MAIN ACTIVITIES

- Outcome 1**
- Provide cash for work and other cash grants
  - Raise public awareness of Disaster Risk Reduction
  - Conducting Community Risk Assessment
  - Foster disaster resilience through bamboo cultivation
  - Promote schools risk preparedness

- Outcome 2**
- Promote climate-resilient and market-oriented agricultural production with potential value chain development
  - Select and strengthen Local Service Providers and Service Provider Associations
  - Promote access to finance

- Outcome 3**
- Establish horticulture nursery in host communities
  - Develop Interactive Popular Theatre (IPT) activities and trainings
  - Develop and disseminate communication and information materials
  - Form a Task Force Committee (TFC) to reduce early marriage

## WORKING WITH SCHOOLS AND YOUTH

The project supports the creation of a conducive school environment, where students and staff can feel safe, through a three-fold strategy including 1) strengthening the capacity of concerned institutions to respond to crisis; 2) mobilizing students and teachers as change agents; 3) raising awareness and advocacy towards child marriage, disaster reduction, and climate adaptation. SHINE promotes the development of **School Level Risk Reduction Action Plan** and the establishment of **School Disaster Management Committees** (SDMCs), student clubs, task forces, and councils to lead campaigns on safety and resilience. The project will train SDMCs, students and teachers facilitating the adoption of school level contingency plans. Youth will be engaged in refugee camps and host communities to promote behavioural change and raise awareness on topics such as early and child marriage through Interactive Popular Theatre, creation of materials, documentaries, radio broadcast, etc. These activities have a great potential to help building bridges between communities.

## THE PROJECT IN BRIEF

### Areas of intervention

**Rohingya Refugee Camps:** camps 3, 4, 4E, 5, 11, 12, 13, 16, 17, 18, 21, 24.

**Host Community:** Rajapalong, Halodiapalong, Palongkhali under Ukhiya Upazila; Hnila & Whykong union under Teknaf Upazila.

**Project duration:** April 2022 – May 2025

**Contacts:** Jahangir Kabir, Project Manager (jahangir.kabir@helvetas.org); Kamlesh Vyas, Regional Humanitarian Coordinator-Asia (kamlesh.vyas@helvetas.org).